

IP Based Alarm receiver

Vanderbilt's SPCS520 enables communication over FlexC or EDP to SPC panels. The software can auto discover communication links and detects the configuration of the SPC panels. Allowing operators to view events, confirm alarm using audio and/or video verification. The SPCS520 also provides multiple operates to access the software with varying levels of control. The SPCS520 can be used in conjunction with alarm management systems by providing a Surgard event stream from the software.

Key Features include:

- SPC Communications
- Communication link monitoring
- SPC Panel control
- SPC Panel status information
- Operators
- Reporting on SPC panels and operators
- Surgard interface

Functions

- EDP Receiver
- FlexC receiver
- Area control
- Output control
- Door control
- Zone Control
- Virtual keypad

Applications:

- Surgard interface
- Alarm verification
- Live audio
- Live Video

Languages:

- English
- German
- French
- Spanish
- Portuguese
- Swedish
- Norwegian
- Czech
- Danish
- Finnish
- Italian



Features & Benefits

■ Alarm Communications

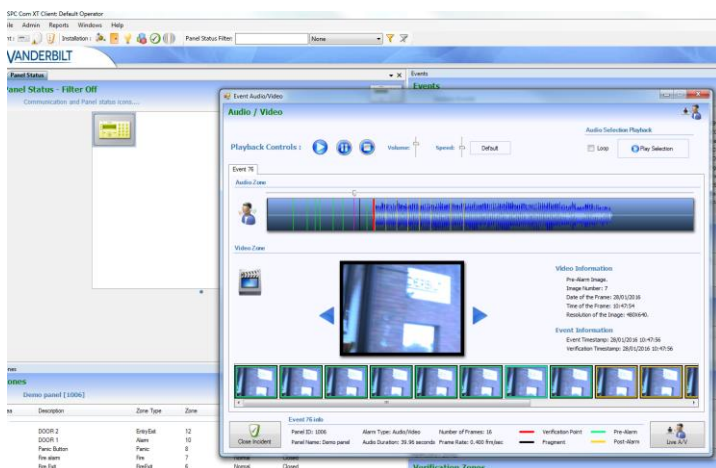
SPC Com XT is a software-based IP alarm receiver, which converts incoming alarms from IP-enabled SPC alarm panels into a common output format, understood by most ARC annunciation software. The SPC Com XT client allows administration, monitoring and controlling of installations. To the ARC annunciation software, SPC Com XT behaves like a regular Sur-Gard interface compatible alarm receiver.

■ Verification

SPC Com XT enables the ARC to benefit from the advanced alarm verification features of the SPC panel family. The SPC Com XT client application allows easy retrieval of pre- and post-event audio and video data in the case of an alarm. A live audio and video connection can be established

■ Fast and secure

SPC Com XT is utilizing Siemens' modern EDP and FlexC-protocols with AES encryption to ensure reliable and secure Alarm-over-IP (AoIP) transmissions. Designed for scalability and performance, ARC-operators can profit from the power of AoIP-technology, like quicker event investigation and intervention times by lower connectivity costs, without sacrificing compatibility.





■ Technical Data

System Architecture

SPC Com XT server and client	Windows client/server application
SPC Com XT Database	Microsoft SQL Server 2005

System Specification

Max. No. Connections	10 (without license) 3,000 max. (depending on IT infrastructure) Under the following conditions: 100 events per second 1 AV Event per second
Server	
Operating System	Windows XP 32bit Windows 7 (32bit and 64bit) Microsoft .NET 3.5 installed
Hardware	Depending upon load, minimum: Intel Xeon E5405 Processor, 2GHz 4 GB RAM or better
Client	
Operating System	Windows XP 32bit Windows 7 (32bit and 64bit) Microsoft .NET 3.5 installed
Hardware	Intel Core i3 CPU M330 @ 2.13 GHz 4 GB RAM or better Audio board: Microphone input, Speaker output

Transmission channel

EDP	
Transport Layer	UDP/TCP
Versions supported	EDP Version V.1 or V.2
Encryption	AES128
Audio video support	Yes
FlexC	
Transport Layer	TCP
Versions supported	FlexC Version V.1
Encryption	AES128
Support paths	10
Audio video support	Yes
Surgard	
IP	Surgard IP format
Serial	RS232

■ Ordering Data

Type	Art. No.	Description	Weight*
SPC	V54549-P101-A100	SPCS520	NA

* Total weight of the product inclusive of the weight of its accessories and packaging.

■ Additional Ordering Data

Type	Art. No.	Description
Keypads		
SPCK520.100-N	V54543-F115-A100	Compact Keypad with graphical display and audio
SPCK521.100-N	V54543-F116-A100	Compact Keypad with graphical display, card reader and audio
SPCK620.100	V54543-F110-A100	LCD keypad with graphical display
SPCK623.100	V54543-F111-A100	LCD keypad with graphical display, card reader and audio
SPCK420.100	V54543-F101-A100	LCD keypad with 2 x 16 characters
SPCK421.100	V54543-F102-A100	LCD keypad with 2 x 16 characters and integrated card reader
Expanders		
SPCE452.100	V54542-F107-A100	Expander with 8 outputs, back tamper
SPCE652.100	V54542-F106-A100	Expander with 8 inputs and 2 outputs, back tamper
SPCW130.100	V54554-F101-B100	SiWay RF-expander
SPCA210.100	V54547-A101-A100	2-door expander
SPCP432.300	V54545-C103-A100	Smart PSU with 2-door expander, G2-housing
SPCP433.300	V54545-C104-A100	Smart PSU with 2-door expander, G3-housing
SPCE110.100	V54542-F104-A100	Keyswitch expander with 2 LEDs and 3-position key switch
SPCE120.100	V54542-F105-A100	Indication expander with 16 LEDs, 4 function keys and integrated card reader
SPCW130.100	V54554-F101-B100	SiWay RF-expander
SPCP332.300	V54545-C102-A100	Smart PSU with 8 inputs and 2 outputs, G2-housing
SPCP333.300	S54545-C101-A100	Smart PSU with 8 inputs and 2 outputs, G3-housing
SPCP355.300	S54545-C105-A100	Smart PSU with 8 inputs and 6 outputs, G5 metal housing
Detectors		
PDM-I12	V54530-F114-A100	MAGIC PIR detector, 12m wide angle
PDM-I12T	V54530-F105-A100	MAGIC PIR detector, 12 m wide angle with Anti-mask
PDM-I18	V54530-F106-A100	MAGIC PIR detector, 18 m wide angle
PDM-I18T	V54530-F107-A100	MAGIC PIR detector, 18 m wide angle with Anti-mask
MK-1400	V54536-F101-A100	Magnetic contact
Accessories		
IPAW8-10	V54538-F107-A100	Wireless personal alarm
IRCW6-11	V54543-F109-A100	SiWay remote control, white replaceable battery
IPAW6-10	V54538-F108-A100	Wireless Personal Alarm Button

Verification

SPCV340.000	V54542-F108-B100	Audio expander with 4 inputs and 1 output
SPCV341.000	V54542-F109-B100	Audio expander with 4 inputs and 1 line output
SPCV310.000	V54542-F120-A100	Audio satellite
SPCV440.000	V54542-F118-A100	Combi audio expander for MAGIC motion detectors with 4 inputs and 1 output
SPCV410.000	V54542-F119-A100	Combi audio satellite for MAGIC motion detectors
CCMS2010-IR	S54561-C112-A100	1/2.7" 2MP Compact IP Camera PoE(LAN)

Access

AR6181-MX	6FL7170-8BK	Multi-technology card reader
PP500-EM	V54501-F1-A1	Heavy-duty card and PIN reader
AR6182-RX	6FL7170-8AE	Multi-technology card and PIN reader



Learn more at www.vanderbiltindustries.com